

H-Frame
Open-Air Chassis

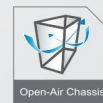
mini



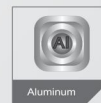
Specifications

Case Type	Open-Air Chassis
Material	1.6~2 mm Aluminum Metal Plate
External Drive Bay	Slim ODD x 1 (Includes SATA ODD EZ-Swap Module x 1)
Internal Drive Bay	2.5" x 2 (Includes SATA HDD EZ-Swap Module x 2)
M/B Form Factor	Mini-ITX
Power Supply	180W Internal PSU
Front Port	USB 3.0 x 2 (Internal Connector) HD Audio
I/O Expansion Slot	Low Profile Card Slot x 1
Dimensions (HxWxD)	262 x 108 x 287 mm (10.3" x 4.3" x 11.3")

* Product specifications are subject to change without prior notice.



Open-Air Chassis



Aluminum



Supports Low Profile Card



USB3.0



SATA HDD EZ-Swap Module



SSD Ready



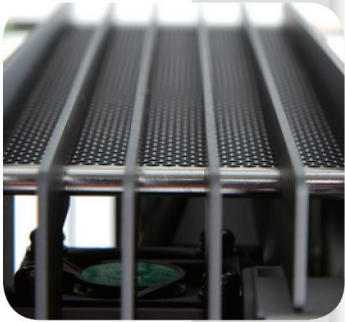
RoHS



Specifications

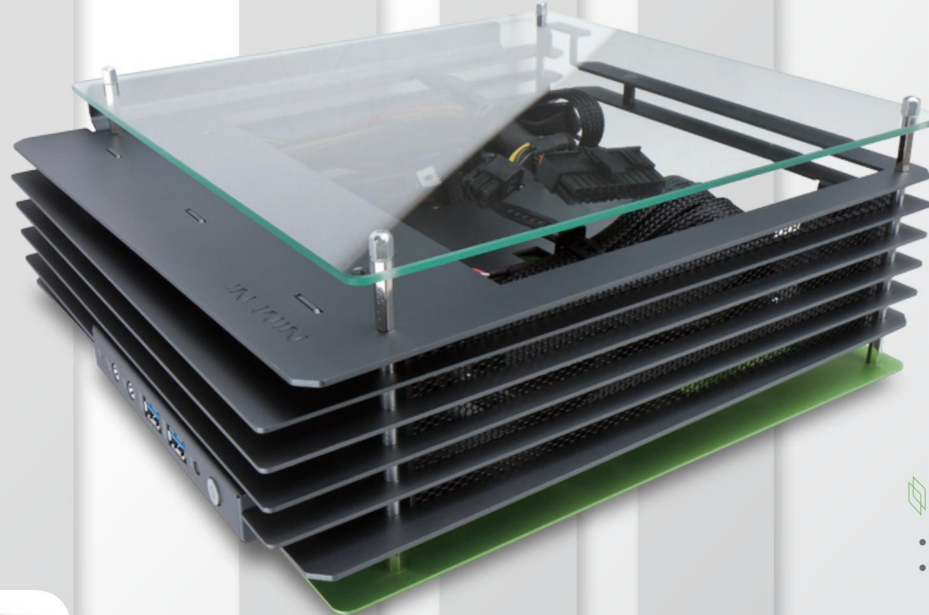
Innovative Design

- Innovative H-Framework with R-curve design
- 1.6~2 mm laser-cut aluminum sheets



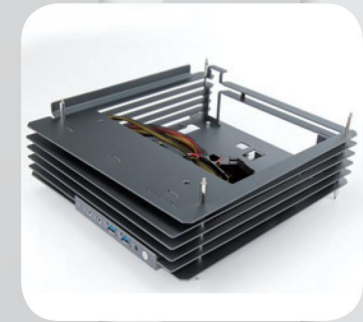
Stylish

- Portrait/Landscape dual-orientation flexible design
- Equipped with aluminum and tempered glass side panels for individual preference



Advanced Cooling System

- Open-air layered aluminum metal plate structure provides excellent thermal performance
- Fan-less design



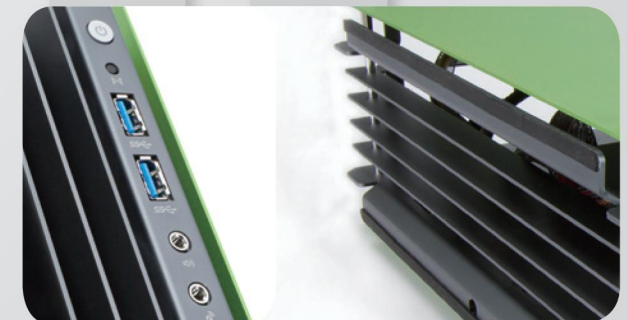
High Performance

- Supports Core i5 & i7
- Supports low profile card slot x 1
- Built-in 180W power supply



User Friendly

- Front USB3.0
- Unique chassis stands for better stability



Easy Installation

- Cable Management
- SATA ODD/HDD EZ-Swap module with modularized cable management

