



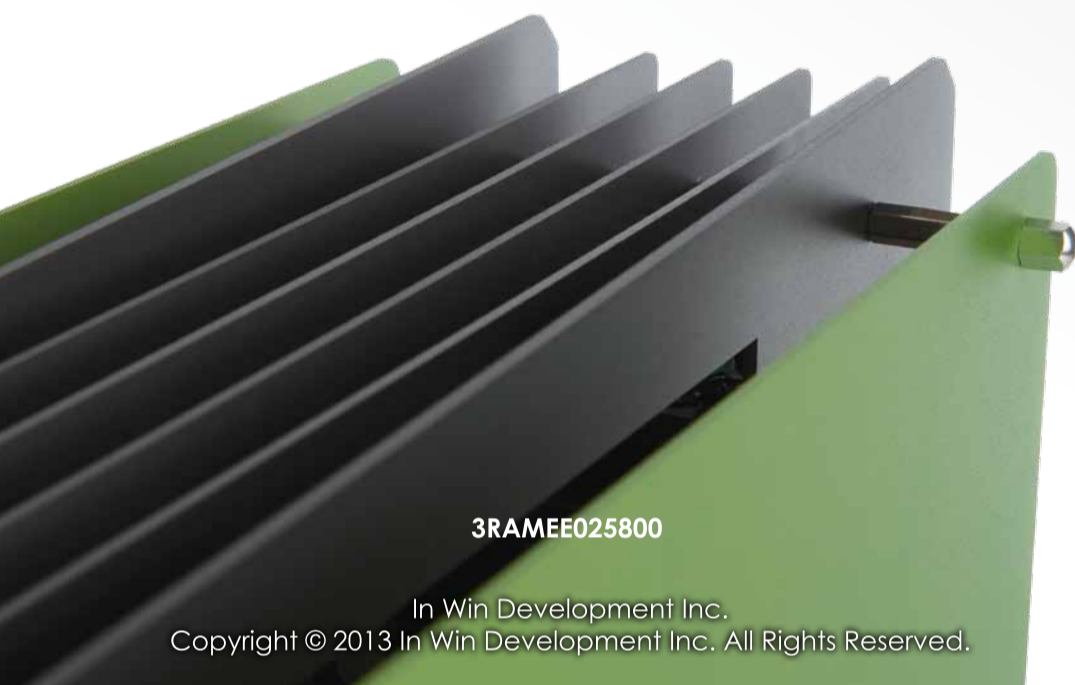
H-Frame
mini

User Manual
 Open-Air Chassis

- User Manual
- 使用手冊



Version 1.0



3RAMEE025800

In Win Development Inc.
 Copyright © 2013 In Win Development Inc. All Rights Reserved.

User Manual • English

Specifications

Case Type	Open-Air Chassis
Material	1.6~2 mm Aluminum Metal Plate
Drive Bays	External: Slim ODD x 1 (Includes SATA ODD EZ-Swap Module x 1) Internal: 2.5" x 2 (Includes SATA HDD EZ-Swap Module x 2)
M/B Form Factor	Mini-ITX
Power Supply	180W Internal PSU
Front Port	USB 3.0 x 2 (Internal Connector) HD Audio
I/O Expansion Slot	Low Profile Card Slot x 1
Dimension (HxWxD)	262 x 108 x 287 mm (10.3" x 4.3" x 11.3")

* Product specifications are subject to change without prior notice.

Case Structure

1 Power button	9 Motherboard mounting area
2 Reset button	10 Low profile card slot
3 USB 3.0 port	11 Dust filter
4 Audio ports (earphone and microphone)	12 Slim ODD bay (Includes SATA ODD EZ-Swap module)
5 LED HDD indicator	13 2.5" drive bay (Includes SATA ODD EZ-Swap module)
6 Aluminum side panel	14 Cable arrangement area
7 Tempered glass side panel	15 Cable clamp
8 Power supply	16 Shock-proof stand

Package Content

1. H-Frame Mini Chassis x 1
2. User Manual x 1
3. Accessories x 1
 - a. Motherboard / Low Profile Card Screw x 7
 - b. Slim ODD Screw x 5
 - c. 2.5" HDD Screw x 10
 - d. Screw Cap for Side Panel x 4
 - e. Screw Cap Dismantling Tool x 1
 - f. Power Cord x 1
4. Tempered Glass Side Panel x 1

Notices and Warranty

- **Notices**
 1. Please follow the user manual for installation.
 2. While installing the computer components, please use the antistatic precautions to prevent ESD (electrostatic discharge) damage. It can cause injury to the installer and damage to the machine. Incorrect installation may burn the motherboard and other components.
 3. To avoid any damages, please do not use product for any purpose other than its intended use.
 4. Any modification may damage the product.
 5. Please remove all internal devices before shipping or moving. (Including power supply, hard drive, CD-ROM, motherboard, CPU and etc.)
 - **Warranty**
 For more detailed warranty information, please visit the In Win retail website at www.inwin-style.com
- *The actual product is subject to change without prior notice. In Win Development Inc. reserves the right to make final modifications.

Case Structure



使用手冊·繁體中文

規格

機殼形式	Open-Air Chassis
材質	1.6~2 mm 鋁合金
磁碟裝置	外露: 薄型光碟槽 x 1 (含SATA光碟易插拔模組 x 1) 內建: 2.5" 磁碟槽 x 2 (含SATA硬碟易插拔模組 x 2)
主機板相容	Mini-ITX
電源供應器	內建180W電源供應器
前置輸出/入埠	USB 3.0 x 2 (Internal Connector) HD Audio
介面卡擴充槽	半高型介面卡(PCI-E)擴充槽 x 1
尺寸 (HxWxD)	262 x 108 x 287 mm (10.3" x 4.3" x 11.3")

* 產品規格如有變更，恕不另行通知。

機體結構

1 電源開關	9 主機板安裝區
2 重開機鍵	10 半高型PCI-E擴充槽
3 USB 3.0 插槽	11 防塵網
4 音源插孔 (耳機和麥克風)	12 薄型光碟槽(含SATA光碟易插拔模組)
5 硬碟指示燈	13 2.5" 磁碟槽(含SATA硬碟易插拔模組)
6 全鋁側板	14 理線空間
7 強化玻璃側板	15 束線扣
8 電源供應器	16 防震腳墊

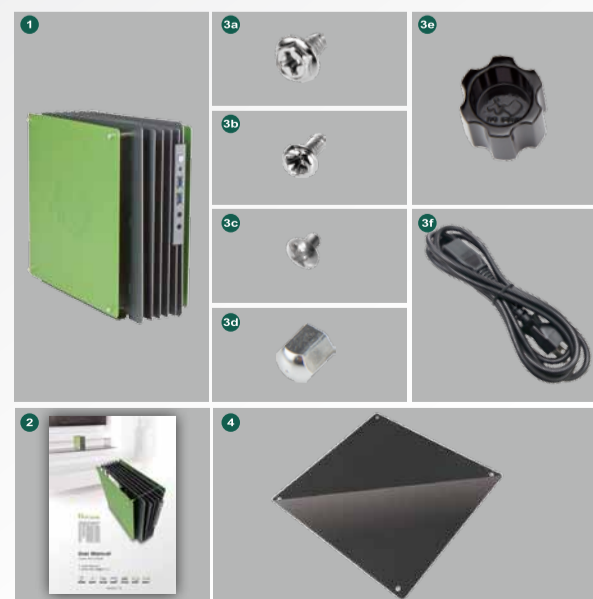
包裝內容

1. H-Frame Mini機殼 x 1台
2. 使用手冊 x 1
3. 零件包 x 1
 - a. 主機板 / 半高型PCI-E擴充卡固定螺絲 x 7
 - b. 薄型光碟機固定螺絲 x 5
 - c. 2.5" 硬碟固定螺絲 x 10
 - d. 側板固定螺絲 x 4
 - e. 螺帽拆裝工具 x 1
 - f. 電源線 x 1
4. 強化玻璃側板 x 1

注意事項和保固範圍

- **注意事項**
 1. 請確實遵循本使用手冊之指示進行安裝！
 2. 安裝電腦產品的過程中，請戴上靜電環及手套進行安裝，否則可能會導致人員及機器的傷害與損壞。錯誤的接頭安裝，嚴重時可能導致主機板及其他零件燒毀。
 3. 請勿使用錯誤方法進行操作或採取指定範圍以外之用途，以免導致本產品及電腦相關裝置損壞。
 4. 請勿將本產品進行改裝使用，以免發生故障。
 5. 如需搬運，請先卸下機殼內所有裝置，包含電源供應器、硬碟、光碟機、主機板、散熱器等，以免造成本產品及電腦相關裝置損壞。
 - **保固範圍**
 本產品之保固範圍及內容等相關資訊，請至迎廣網站www.inwin-style.com 查詢。
- *產品請以實際出貨內容為準，迎廣科技保留最終修改權利。

Package Content



Installation Guide (Please follow the related chapters to assemble)

1 Opening the Chassis

Parts Required: Screw Cap Dismantling Tool



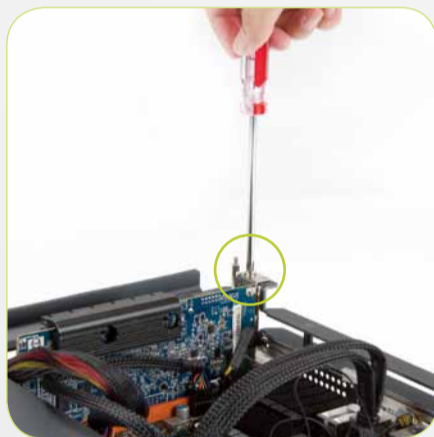
2 Motherboard Installation

Parts Required: Motherboard screws



3 Add-On Card (PCI-E) Installation

Parts Required: Add-on card screws



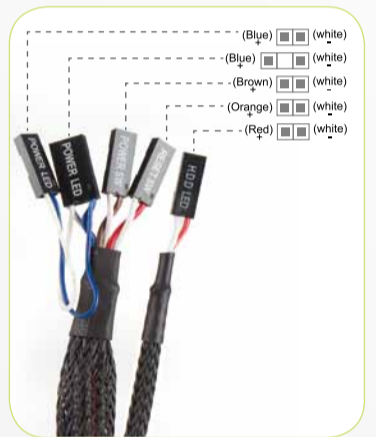
4 I/O Wires Installation

Parts Required: None

USB 3.0 Header

HD Audio Header

Switch/LED Connector



5 5.25" and 2.5" Drive Bays Installation (ODD/ HDD)

5-1 Slim ODD Installation

Parts Required: Slim ODD screws



5 5.25" and 2.5" Drive Bays Installation (ODD/ HDD)

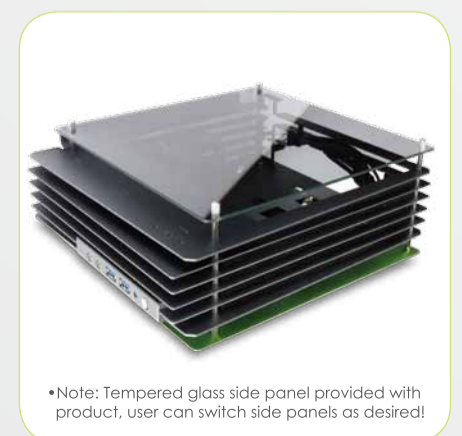
5-2 2.5" HDD Installation

Parts Required: 2.5" HDD screws



6 Cable Management

Parts Required: None



*Note: Tempered glass side panel provided with product, user can switch side panels as desired!