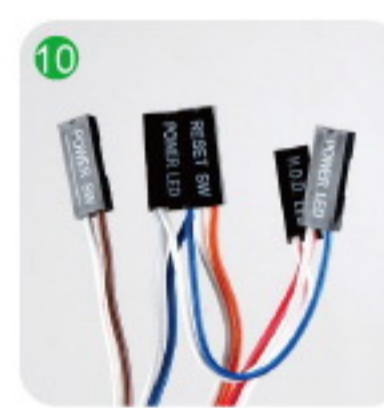
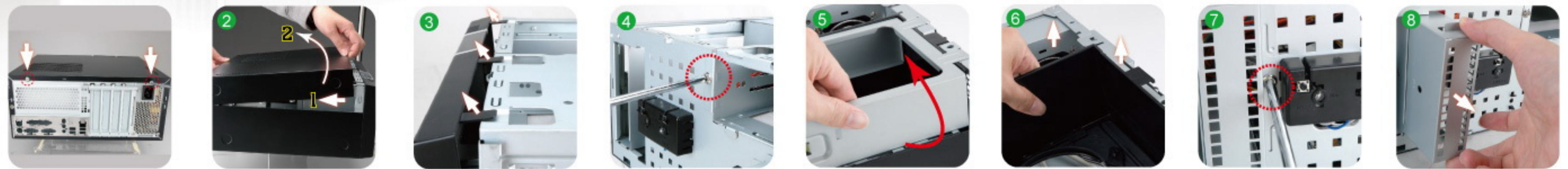


# BK-Series Installation Guide

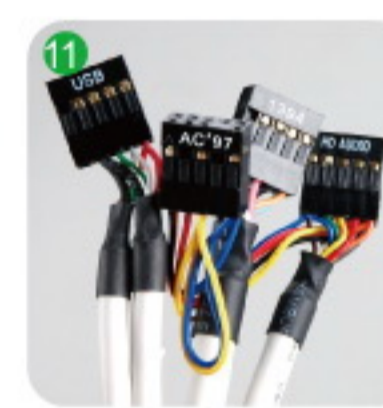
(The following steps will guide you through the assembly process)

Please note that the pictures provided in this installation guide are for your reference only, and they may vary from the actual product.



#### Front Panel Header

H.D.D. LED	Red	White
Reset SW	Orange	White
Power SW	Brown	White
Power LED	Blue	White
Power LED	Blue	White



#### IEEE 1394 Header

TPA1+	1	TPA1-	2
Ground	3	Ground	4
TPA2+	5	TPA2-	6
+12V	7	+12V	8
Key (no pin)	9	Ground	10

#### USB Header

VCC (+5V)	R	(Red)
D-	W	(White)
D+	G	(Green)
GND	B	(Black)

#### HD Audio Header

(MIC) Port 1L	1	Ground	2
(MIC) Port 1R	3	Presence#	4
(Headphone) Port 2R	5	Sense1_Ret	6
Sense_Send	7	Key (no pin)	8
(Headphone) Port 2L	9	Sense2_Ret	10

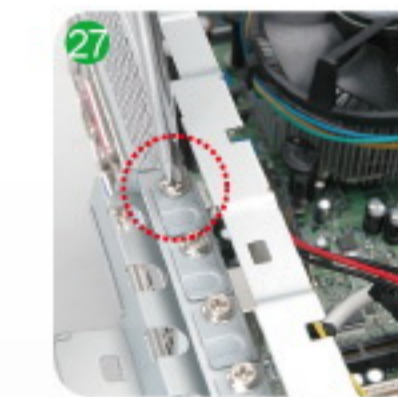
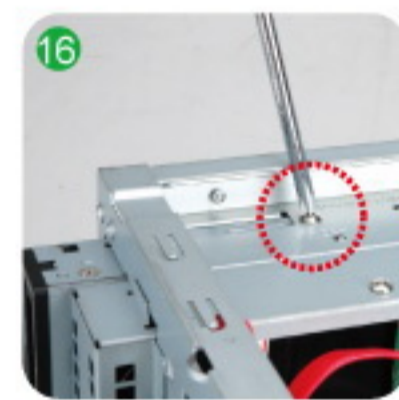
#### AC'97 Audio Header

MIC	1	AUD_Ground	2
MIC Bias	3	AUD_Ground	4
FP_Out_R	5	FP_Return_R	6
No use	7	Key (no pin)	8
FP_Out_L	9	FP_Return_L	10



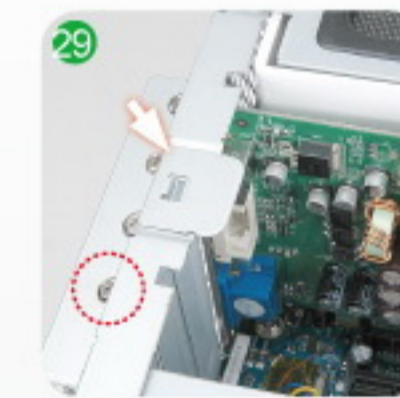
## 【Opening the Chassis】

1. Remove Top Cover :  
Unlock the screws and remove top cover. 1 2
2. Remove Front Panel :  
Unlock the locking tabs and remove front panel. 3
3. Remove ODD Cage :  
Unlock the screws. 4  
Pull up and remove ODD Cage. 5
4. Remove Partition Plate :  
Pull up and remove the partition plate. 6
5. Remove HDD Cage :  
Unlock the screws. Pull the HDD Cage towards the front and remove HDD Cage. 7 8



## 【Motherboard Installation】

6. Follow M/B Installation Guide to connect the power cables to M/B. Equip I/O-shield, Motherboard, CPU, Memory and heat sink. 9



## 【Front I/O Wires Installation】

7. Connect all cables to M/B. (Included USB, 1394, HDD LED, HD Audio, Power Switch, Power LED, Reset Switch, etc...) (IEEE1394 is an optional feature.) 10 11

## 【External HDD Installation】

8. Equip HDD drive into the HDD cage. Slide HDD cage into the HDD bay. 12 13
9. Connect cables to the HDD drive. Secure it with screws. 14

## 【External 3.5" Card Reader Installation】

10. Slide 3.5" Card Reader drive into the 3.5" drive bay. 15
11. Connect cables to the Card Reader drive. Secure it with screws. 16

## 【Partition Plate Installation】

12. Place Partition Plate on the chassis. Place IDE/SATA and Power cables through partition. 17 18
13. Adjust the position of ventilation hole according to the CPU fan location. 19

14. Adjust the half-moon shaped air duct position according to CPU. 20

## 【ODD (5.25" drives) Installation】

15. Slide ODD ROM into the ODD cage. Place ODD cage into the chassis. Remove filter from ODD cage. (Filter is an optional part.) 21 22
16. Connect IDE/SATA and Power cables to ODD ROM. Equip filter on ODD cage. (Filter is an optional part.) 23 24
17. Secure the position with screws from the front. 25

## 【Add-On (PCI/AGP) Card Installation】

18. Pull up the I/O slot screw cover and unlock the screws. Remove the I/O slot cover. 26 27
19. Equip Add-On cards. 28
20. Lock the screws and close the slot screw cover. 29

## 【Panel Installation】

21. Install the front panel. 30
22. Slide the top cover back over the chassis and secure it with screws. 31

## 【Installation Complete】

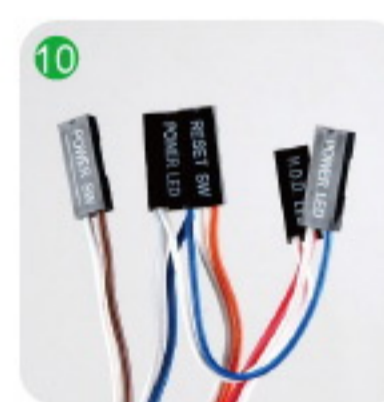
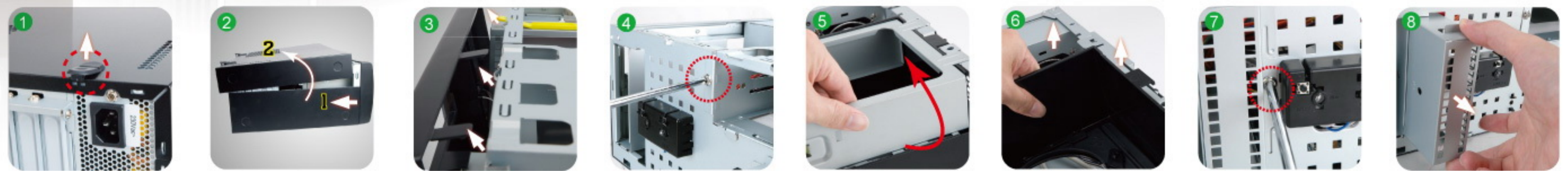


# BK-Series

## [Screwless Version] Installation Guide

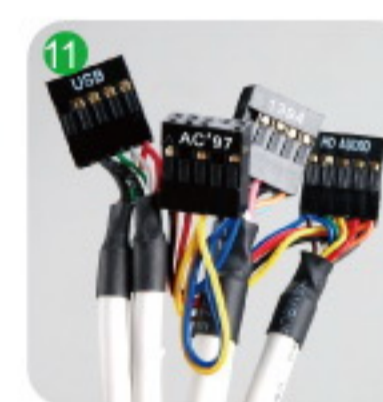
(The following steps will guide you through the assembly process)

Please note that the pictures provided in this installation guide are for your reference only, and they may vary from the actual product.



**Front Panel Header**

H.D.D. LED	Red	White
Reset SW	Orange	White
Power SW	Brown	White
Power LED	Blue	White
Power LED	Blue	White



**IEEE 1394 Header**

TPA1+	1	TPA1-	2
Ground	3	Ground	4
TPA2+	5	TPA2-	6
+12V	7	+12V	8
Key (no pin)	9	Ground	10

**USB Header**

Power (5V)	1	Power (5V)	2
USB DX-	3	USB DY-	4
USB DX+	5	USB DY+	6
GND	7	GND	8
No Pin	9	NC	10

**HD Audio Header**

(MIC) Port 1L	1	Ground	2
(MIC) Port 1R	3	Presence#	4
(Headphone) Port 2R	5	Sense1_Ret	6
Sense_Send	7	Key (no pin)	8
(Headphone) Port 2L	9	Sense2_Ret	10

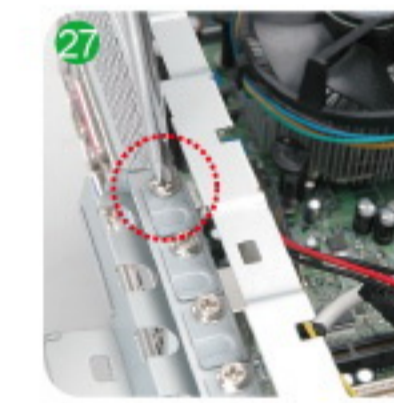
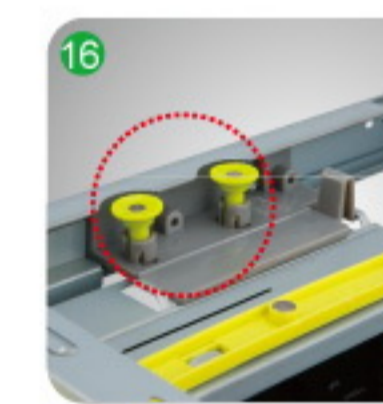
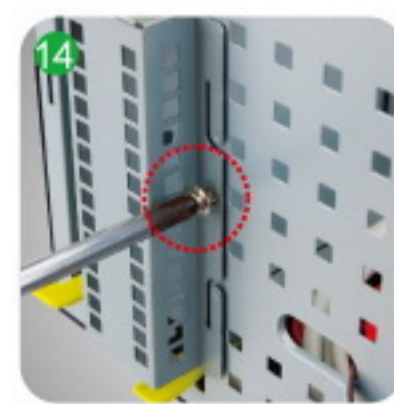
**AC'97 Audio Header**

MIC	1	AUD_Ground	2
MIC Bias	3	AUD_Ground	4
FP_Out_R	5	FP_Return_R	6
No use	7	Key (no pin)	8
FP_Out_L	9	FP_Return_L	10



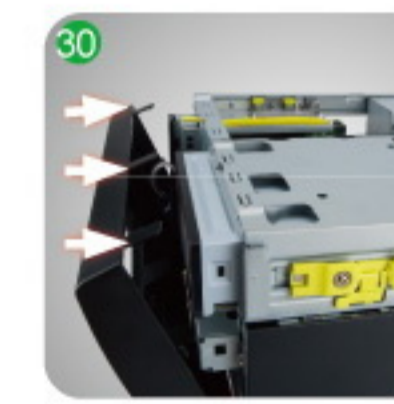
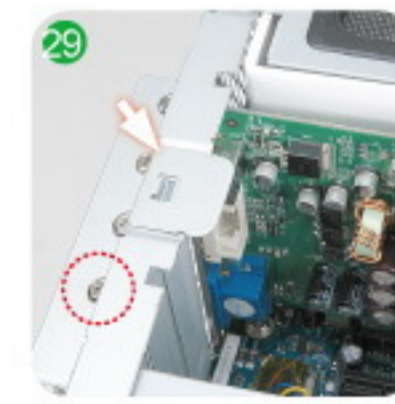
### 【Opening the Chassis】

- 1.Remove Top Cover :**  
Unlock both top cover clips and remove top cover. 1 2
- 2.Remove Front Panel :**  
Unlock the locking tabs and remove front panel. 3
- 3.Remove ODD Cage :**  
Unlock the screws. 4  
Pull up and remove ODD Cage. 5
- 4.Remove Partition Plate :**  
Pull up and remove the partition plate. 6
- 5.Remove HDD Cage :**  
Unlock the screws. Release the bottom on the sliding rails. Pull the HDD Cage towards the front and remove HDD Cage. 7 8



### 【Motherboard Installation】

- 6.Follow M/B Installation Guide to connect the power cables to M/B. Equip I/O-shield, Motherboard, CPU, Memory and heat sink. 9**



### 【Front I/O Wires Installation】

- 7.Connect all cables to M/B. (Included USB, 1394, HDD LED, HD Audio, Power Switch, Power LED, Reset Switch, etc...) (IEEE1394 is an optional feature.) 10 11**

### 【External HDD Installation】

- 8.Take off the HDD rack then place HDD into the HDD cage. Attach the sliding rails on the side of HDD and slide HDD cage into the HDD bay. 12 13**
- 9.Connect cables to the HDD drive, and push the HDD cage to the end then it will be hitched. 14**

### 【External 3.5" Card Reader Installation】

- 10.Unlock the 3.5" hard drive cage clip. Slide 3.5" Card Reader drive into the 3.5" drive bay. 15**
- 11.Connect cables to the Card Reader drive and stable the clips. 16**

### 【Partition Plate Installation】

- 12.Place Partition Plate on the chassis. Place IDE/SATA and Power cables through partition. 17 18**
- 13.Adjust the position of the ventilation hole according to the CPU fan location. 19**

### 【Add-On (PCI/AGP) Card Installation】

- 14.Adjust the half-moon shaped air duct position according to CPU. 20**
- 15.Unlock locking tabs and pull it up. Slide ODD ROM into the ODD cage. Lock the locking tab clips and fasten it closed. Place ODD cage into the chassis. Remove filter from ODD cage. (Filter is an optional part.) 21 22**
- 16.Connect IDE/SATA and Power cables to ODD ROM. Equip filter on ODD cage. (Filter is an optional part.) 23 24**
- 17.Secure the position with screws from the front. 25**

### 【Add-On (PCI/AGP) Card Installation】

- 18.Pull up the I/O slot screw cover and unlock the screws. Remove the I/O slot cover. 26 27**
- 19.Equip Add-On cards. 28**
- 20.Lock the screws and close the slot screw cover. 29**

### 【Panel Installation】

- 21.Install the front panel. 30**
- 22.Slide the top cover back over the chassis and fasten the top cover clips. 31**

### 【Installation Complete】